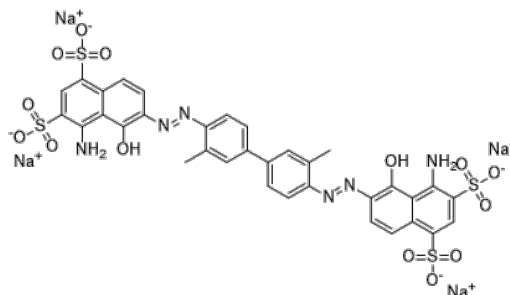


**Product Name** : Evans Blue  
**Cat. No.** : PC-24513  
**CAS No.** : 314-13-6  
**Molecular Formula** : C<sub>34</sub>H<sub>24</sub>N<sub>6</sub>Na<sub>4</sub>O<sub>14</sub>S<sub>4</sub>  
**Molecular Weight** : 960.79  
**Target** : CaMK  
**Solubility** : 10 mM in DMSO



## Biological Activity

Evans Blue is a selective small-molecule inhibitor of CaMKII-alpha (CaMKII- $\alpha$ ) with IC<sub>50</sub> of 197.1 nM, also is a potent inhibitor of L-glutamate uptake via the membrane bound excitatory amino acid transporter (EAAT).

Evans Blue is a L-glutamate and kainate receptor-mediated currents inhibitor.

Evans Blue has a strong affinity towards serum albumin, as a high molecular weight protein tracer.

Evans Blue is also used to study BBB (blood-brain barrier) permeability.

## References

Tian J, et al. Cancer Sci. 2025 Apr 4. doi: 10.1111/cas.70051.

Linpeng Yao, et al. Contrast Media Mol Imaging. 2018 Apr 22;2018:7628037.

Anatol Manaenko, et al. J Neurosci Methods. 2011 Feb 15;195(2):206-10.

**Caution: Product has not been fully validated for medical applications. Lab Use Only!**

E-mail: tech@probechem.com